



# NORTH WARWICKSHIRE & HINCKLEY WOODTURNING CLUB

NEWSLETTER August 2019

[www.hinckleywoodturners.org.uk](http://www.hinckleywoodturners.org.uk)

## Notes from the Editor

Inside, you will find the demo by Roger Gilbert, who did some nice involuted (inside out) turning. For those of you looking for the demo by Brian Cokerill, he turned a tool handle. A very nicely polished tool handle, but still only a tool handle, so I haven't bothered to give him a write up.

Some of you may know Terry Smart, producer of the Chestnut range of products. On the weekend of the 3rd and 4th August, he organised a Woodturning Weekender, where each of four professional turners gave a 2 hour demonstration followed by a half hour question and answer session. The Saturday started with Stewart Furino in the morning and Phil Irons in the afternoon. On Sunday we saw Gary Lowe in the morning and Pat Carroll in the afternoon. Emma Cook was supposed to be the final demonstrator but had to pull out at short notice due to family commitments. Between demonstrations, local woodturning clubs were demonstrating and had displays of their best pieces.

I didn't see any of you there, so I have enclosed a few pictures to show you what you missed. Terry will be holding another one next year, so keep a look out for it.

Regards  
Rob Sheehan

## Roger Gilbert 16/7/2019

By Rob Sheehan



Roger's first piece was an involuted cake stand in Beech. Involute or inside out turning starts with four identical pieces cut on his bandsaw and glued back together, inside out, with paper between the pieces. For speed, Roger had already turned the inside of the central column, and permanently glued the four pieces back together in their proper orientation. One end of the piece was held in a chuck and the other end by a ring centre. Roger used a spindle roughing gouge to turn down the end and a parting tool to create a 1" spigot. He further

shaped the bottom with a spindle gouge. Roger used a wooden spigot holder mounted in the chuck jaws to hold the spigot and a ring centre to hold the other end. He then shaped the piece with a spindle gouge followed by a skew chisel for the best finish. As the piece got thinner, the central ribs became more parallel in shape. Roger shaped the top to take a brass plate lamp fitting and then sanded 120 grit to 400 grit.

Roger mounted the lamp base on a screw chuck and trued up the edge and face. He cut a dovetail recess in the bottom followed by further hollowing of the recess to take the cable (idea copied from Richard Findley). After drilling a cable access hole in from the side, Roger sanded the recess. He then refined the shape of the base by losing a bit from the diameter and thickness. After mounting the base on the recess, Roger marked the recess to take the stem. After testing the fit, he created a small flat/undercut to ensure a good fit for the stem. Roger then finalised the shape of the base by adding a v-cut near the stem recess, a bead on the edge of the base and created a small taper to "lift" the base. He then sanded and sealed the base before gluing the two together.



Roger then suggested other ideas for the hollow stem: a hollow brass rod down the centre (to take the cable); a ball or snowman mounted on the rod?



## Pictures From Terry Smart's Woodturning Weekend By Rob Sheehan



Terry Smart bearing a bowl ukelele, a gift from Andrew Hall aka The Hat Man



Stewart Forino, a teacher of English Literature as well as a wood turner

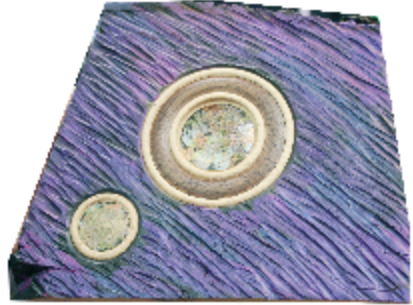


Phil Irons.  
President of the  
AWGB





Gary Lowe



Pat Carroll



***NORTH WARWICKSHIRE & HINCKLEY  
WOODTURNING CLUB EVENTS 2019***

August	20th	Demo	Gary Rance
September	3rd	Hands On	
	17th	John Johnson	
October	1st	Hands On	
	15th	tbd	
November	5th	AGM followed by Hands On	
	19th	tbd	
December	3rd	Steve Heeley	
	17th	Christmas Social	