



NORTH WARWICKSHIRE & HINCKLEY WOODTURNING CLUB

NEWSLETTER January 2024

www.hinckleywoodturners.org.uk

Notes from the Editor

Happy New Year to all members. 2023 was a good year for the club. We had many very good demonstrations. And for 2024, Paddy Byrne has booked a good programme of events for the coming year too.

Sadly, we lost former club member Tony Skidmore on Christmas Day. His obituary is later in the newsletter.

Please keep sending me your projects. Just a picture and a few words is all that is necessary. Also send me your favourite places to visit. They might give members and idea for a good day out

Our next meeting is on Tuesday 6th February when Nick Adams will be demonstrating. On his two previous visits, Nick talked about making a longbow and making a lute. He is very knowledgeable so I am looking forward to his demo - regardless of what he is going to talk about and demonstrate this time. See his YouTube channel:

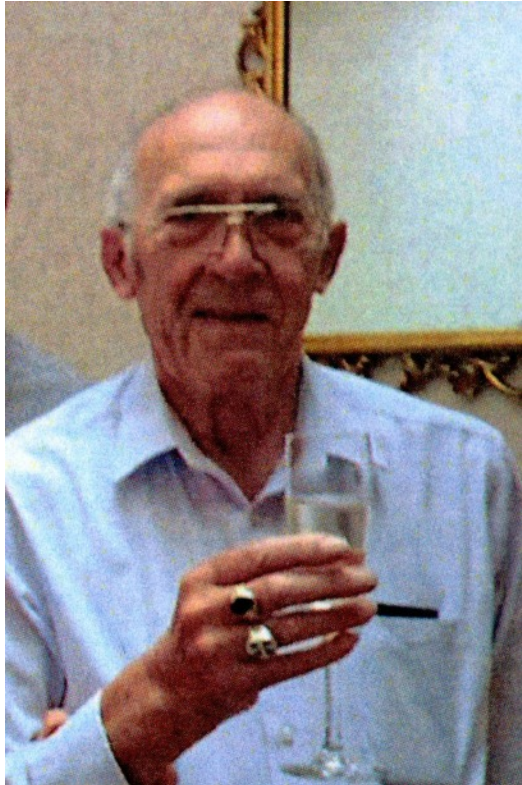
<https://www.youtube.com/channel/UCMvVYpLi-oOAss9Td4IDgig/about>

We have now received more information about the Woodworks at Daventry competitions on 10th/11th May. If you have plans for a multi tier carousel, a child's rattle, a square bowl or a taaza, let us know so that we can practise.

Rob Sheehan

Cbituary of Former Club Member Tony Skidmore

Anthony (Tony) Skidmore was a valued club member for many years. He most recently held the position of Events Secretary, booking both professional and amateur turners for our demonstrations. There is no “good” day to die but his death on Christmas Day 2023 will make it memorable for years to come.



Off-Centre Candlestick 16/1/2024

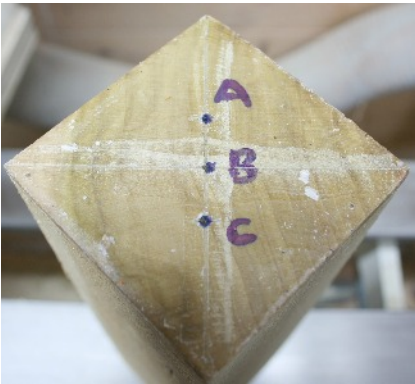
By Rob Sheehan



I found an article in Woodturning magazine issue 356 by Sue Harker. My version differs slightly from the original. This is how I made my version.

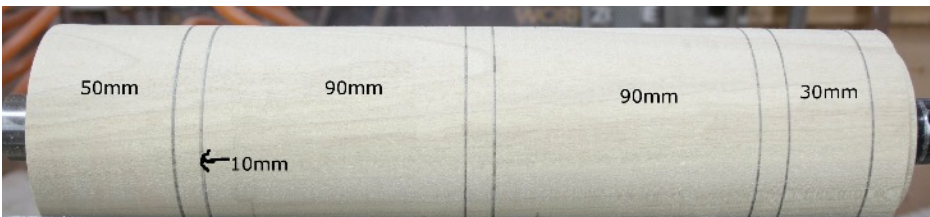
Step 1 - Marking Out Stage 1

Starting with a Tulipwood (American Poplar) blank 12" long by 3" square, mark the centres at each end using the corner to corner method. Using one of the corner to corner lines, mark another two offset centres (A & C) 16mm either side of the true centre. Repeat this at the other end making sure the same diagonal and orientation is used. Then mount the blank between the true centers (B), turn it to 65mm round and add a chucking spigot at the tailstock end. Do not lose the centre markings.



Step 2 - Marking Out Stage 2

Each of the features are now marked out on the cylinder. Starting at what will become the top of the candlestick, mark 50mm for the "apple" shape on top, 10mm for a cove and two filets, 90mm for the first oval, 10mm for another cove and filets, 90mm for another oval, 10mm for another cove and filets and 30mm for the base.



Step 3 - Roughly Shape The Coves/Filets

Headstock centre B. Tailstock centre B (true centres).

Using a parting tool, take down the three cove/filet sections to 30mm diameter. This leaves enough strength while allowing the ovals and apple to be shaped. The coves and filets will be reduced in diameter to 20mm and shaped later.



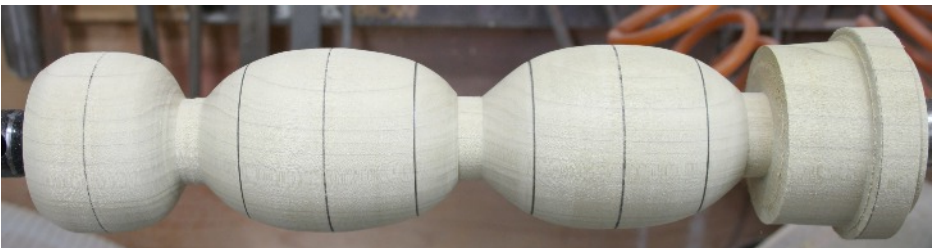
Step 4 - Roughly Shape The Ovals

Headstock centre B. Tailstock centre B (true centres).

Using a spindle gouge, shape the outside of both ovals. The maximum diameter should be 65mm and curve down to the filets. Later you will come back and finish the ovals after the offset cut-outs have been turned and the filets taken down to their final size.



Then mark the oval cut outs. From the centre line of each oval, mark a line 30mm either side of the centre line. This is the width of the cut out.



Step 5 - Offset A

Headstock centre A. Tailstock centre A.

Turn the speed down, adjust the tool rest and **turn the piece by hand** to make sure it doesn't catch the tool rest. Check the centres, tool rest and banjo are locked tight. Start the lathe and gradually increase the speed.

Using a spindle gouge, cut a cove in the centre of the oval nearest to the tail stock. As you are cutting mostly air, a sharp tool and good tool presentation are essential. Keep widening and deepening the cove until it reaches the 60mm wide lines and just starts to break through the outside of the oval. The thickness at the thinnest part of the cove should be about 30mm. Sand carefully. With the lathe stationary, a sanding pad in a battery drill gives a good finish.



Step 6 - Offset C

Headstock centre C. Tailstock centre C.

Following the same safety procedure as step 5, repeat step 5 for the cut-out nearest the headstock. Aim to turn the cove to the same shape as in step 5.



Step 7 - Drill For Candle Holder

Mount the candlestick in a chuck. Drill the top to take a candle cup or tealight holder as appropriate and refine with a spindle gouge as necessary. I use a



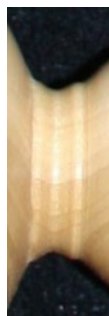
“spade” drill bit that I have ground to the shape of a candle cup. Shape the “apple” top with a spindle gouge.

The maximum diameter should be 60mm. With an apple shape, the widest point is just above centre.



Step 8 - Refine The Coves/Filets

The cove/filet areas can now be taken down to their final diameter of 20mm using a parting tool and calipers. Use a 1/4” spindle gouge to cut the coves and try to get a crisp edge to the filets. The apple-shaped top and the ovals will have to be re-cut to match the new filets. Re-shape the outsides down to 60mm diameter. This will also remove the over cut from the oval cut-outs.



Step 9 - Turn The Base

Using a spindle gouge, turn the base. Use a 3/8” spindle gouge to turn a bead on the bottom. Use a skew chisel to cut a bird’s mouth slot above the bead and use the spindle gouge to cut a gentle curve up to the filet.



Step 10 - Sand, Finish And Part Off

Most of the piece can be sanded as normal. Use a pad to sand the ovals. Some sanding with the lathe stationary will be necessary. A sanding pad in a battery drill helps here. Apply sanding sealer and your choice of finish. Part off, leaving the base slightly concave. Sand and finish the base. Fit the candle cup or tealight holder. *** There MUST be a non-flammable boundary between the candle/tealight and the wood of the candlestick ***.



Copyright (c) North Warwickshire & Hinckley Woodturning Club 2024

NORTH WARWICKSHIRE & HINCKLEY WOODTURNING CLUB EVENTS 2024

| | | | |
|----------|-------|--------------------|-------------------------|
| January | 2nd | No Meeting | |
| | 16th | Demo | Rob Sheehan |
| February | 6th | Demo | Nick Adams |
| | 20th | Demo | Bob Smith |
| March | 5th | Hands-On | |
| | 19th | Demo | Peter Denning |
| April | 2nd | Hands-On | Sharpening |
| | 16th | Demo | Wolfgang Schulz-Zachau |
| May | 7th | Demo | Bill Bennett |
| | 10-11 | Woodworks@Daventry | |
| | 21st | Demo | Giles Headley (pottery) |
| June | 4th | Demo | Robert Till |
| | 18th | Hands-On | |
| August | 6th | Demo | Paul Hannaby |
| | 20th | TBD | |

Events at Other Clubs

Please contact the club to check times/dates/locations before attending

Coombe Abbey (Shilton Village Hall 6:30pm)
Friday February 16th Ian Ethel