



NORTH WARWICKSHIRE
& HINCKLEY
WOODTURNING CLUB

Newsletter
January 2025



LOTTERY FUNDED

Find us on 

www.hinckleywoodturners.org.uk

Notes From The Editor

Welcome to the first newsletter of 2025. Inside, you will find my report on the demonstration by new club member Chris Grimshaw. Chris has only been turning for a few years but his results speak for themselves. This was his second demonstration and he produced a decorative bowl with a coloured lacquer metal lid.



Subscriptions are now due. The AWGB have increased their subs to £24 per year. The club subs remain at £5 per year. Pay Paddy £29 asap.

Our next meeting is a Hands-On on Tuesday 4th February.

We are making good progress on the Woodworks tea set project. Bob Smith came up with the plans and design based on his wife's treasured tea set. Bob and Charlie have started on the turning but we need more members to contribute. If you fancy turning a tea cup or saucer, let Bob know.

The other competition pieces for Woodworks at Daventry have also been announced. On Friday, we have to turn an egg and egg cup in 1 1/2 hours. On Saturday, we have to turn a carver's mallet in 1 1/2 hours. Over the weekend, we have to turn a bowl with legs. If you fancy volunteering for one of the projects, please let chairman John Evans know.

Happy New Year

Rob Sheehan

Secretary, Newsletter Editor & Web Site Manager

Demonstration by Chris Grimshaw 21/1/25

This was Chris' second demonstration for the club. This time, he turned a bowl/hollow form with a coloured lacquer metal lid.



Chris started with an 8" x 2" round blank of Sapele. He had already drilled it and mounted the blank on a screw chuck. Chris planned to use a recess to hold the blank for hollowing, so he marked a circle on the underside which was the correct diameter to fit his Axminster SK80 C-jaws.



With the tailstock for support, Chris has trued-up the edge and started to shape the outside of the bowl.



Chris flattened the base and re-marked the chuck recess. He then cut the recess with a parting tool and used a skew chisel to create a dovetail under-cut. He left the timber in the centre to turn a button for decoration.



Chris added a shallow foot on the base of the bowl and turned a decorative button in the centre of the recess. He also made a v-cut in the centre of the button for more decoration.



The bottom of the bowl sanded from 80 grit to 600 grit. Chris used Isopropyl Alcohol to remove any dust from the surface before applying a coat of Chestnut Cellulose Sanding Sealer. When dry, he used Chestnut Friction Polish and finally Microcrystalline Wax.



Chris mounted the recess in the chuck and flattened the face. Measuring the lid, he cut a shallow recess to fit the lip on the underside of the lid. It took a few attempts widening the recess until the lid was a good fit. Chris then deepened the recess and cut another, shallow recess, to fit the outside of the lid. He then marked a line 3/4" outside of the recess for a decorative bead.



Chris turned the bead and flattened the top of the bowl, rounding over the edge to meet the curve on the underside. He then made the recess deeper and wider, using an Easy Tools medium hollowing tool to undercut the rim. As this was a purely decorative form, Chris didn't undercut or hollow the form too much.



Chris sanded the top 80 grit to 600 grit, followed by Alcohol to clean, sanding sealer, friction polish and finally, a coat of wax.





The finished bowl with
coloured lacquer metallic
lid fitted.





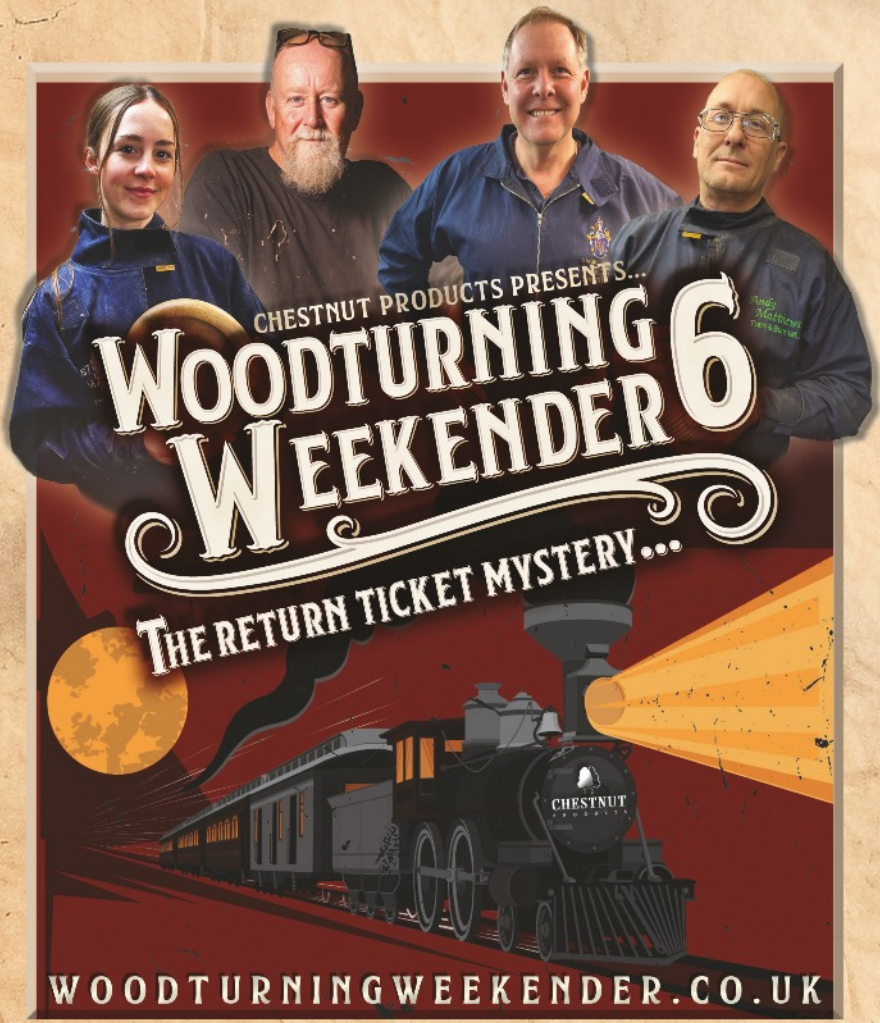
Timber Sale

Rowan Woodland Products

are holding a sale of timber on Sunday 9th February 10 am - 1:30 pm.

Swannington Village Hall,
Main Street,
Swannington,
Coalville LE67 8QL

<http://rowanwoodlandproducts.weebly.com/>



9-10 AUGUST 2025 • STEAM, FIRE FLY AVENUE, SWINDON, SN2 2EY

THE MAIN SUSPECTS... KATIE ARMSTRONG • ANDY FORTUNE • SIMON HOPE • ANDY MATTHEWS

BE ON THE LOOKOUT FOR... AWGB • ALAN CRAMER • GIANNI DEIDDA • STEPHEN MADDEN • BEE MATTHEWS • DAN REES • COLIN WATSON • BENJAMIN MANEY • LOCAL CLUBS • PLUS MORE TBA! • SUPPORTED BY AXMINSTER TOOLS •

ASSISTING WITH ENQUIRIES AND HANDLING MONEY... CHESTNUT PRODUCTS • THE TINY TURNER • WOODART PRODUCTS • HOPE WOODTURNING • SHENTON WOODCRAFT • JS SAFETY • MARTIN PIDGEN TIMBER • TURNERS RETREAT • PLUS MORE TBA!

UNABLE TO TRAVEL? LIVESTREAM TICKETS WILL BE AVAILABLE, ALLOWING YOU TO WATCH LIVE AND FOR UP TO 6 MONTHS AFTERWARDS!

Items For Sale

Disclaimer

The club is not responsible for any item appearing on this page. The buyer and seller must make their own arrangements as to the condition, suitability, delivery, payment and price etc.

Ken Croft's wife is selling his lathe, turning tools and machinery. Collection only, from Coventry.

If you are interested, contact Rob Sheehan 07905185122 or robsheehan@virginmedia.com. I have enclosed a few pictures here. The rest will be sent on request. I have not been given any prices.





Items For Sale

Disclaimer

The club is not responsible for any item appearing on this page. The buyer and seller must make their own arrangements as to the condition, suitability, delivery, payment and price etc.

Chris Trivett 0116 2312 954 or via email chrisrivett@gmail.com is selling some machinery on behalf of his Father-in-law. Collection only, from near Market Bosworth.

Editor: I have not seen the equipment so I can't advise on its suitability. Chris is not a member of the club.

Item	Model	Additional Description
Wood-Turning Lathe	Record Power DML 36SH Serial No. 002269	Year of Construction 2001 450/950/2000 RPM 36" Spindle & 12" Bowl Lathe sits on welded steel bench. Selection of turning tools may also be separately available.
Pillar Drill	Naerok GP13	1/2" Capacity Power supply through switched isolator box
Bandsaw	Powerline Bk2 (2 Speed)	
Extract System	Axminster 1 HP	Registered in 2003 c/w Selection of extract hoses and gails
Circular Saw	Metabo Tk 1688 W No 43506830001	Magnum Series Supported on welded steel frame
Planer Thicknesser	AEG:- HV 82/102 & EH 102	With wood stand

Lathe



Chris Trivett Items for Sale - continued

Extract System and Planer Thickness



Pillar Drill



Bandsaw



NORTH WARWICKSHIRE & HINCKLEY CLUB EVENTS 2025

January	7th	Hands-On	
	21st	Demo	Chris Grimshaw
February	4th	Hands-On	
	18th	Demo	Rob Sheehan - Pepper Mill
March	4th	Demo	Chris Parker (Bald Turner)
	18th	Hands-On	
April	1st	Demo	John Evans + Tony Baxter
	15th	Hands-On	Daventry Preparation
May	5th	Hands-On	Daventry Preparation
	9/10th	Woodworks at Daventry	
	20th	Demo	Bob Smith
June	3rd	Demo	Phil Steele - Pole Lathe
	17th	TBD	

Events at Other Clubs

Please contact the club to check times/dates/locations before attending

Coombe Abbey

Friday February 21st demo by Paddy Byrne
Shilton Village Hall 6:30 pm - 9 pm