



NORTH WARWICKSHIRE
& HINCKLEY
WOODTURNING CLUB

Newsletter
November 2024



LOTTERY FUNDED

Find us on 

www.hinckleywoodturners.org.uk

Notes From The Editor

Inside you will find my report on the demonstration by club member Paddy Byrne. Using offset turning, he turned a snail in record time.



Our next meeting is a Hands-on session on December 3rd. Our final meeting of the year will be on December 17th when we will hold our Christmas Party. Thanks to Bob Smith (& wife) who are preparing the buffet.

The Hinckley Christmas light switch on took place on Friday November 22nd. On the day, we raised a magnificent £356. Together with other donations raised earlier, we donated £456 to the Air Ambulance. Well done to all members who donated items and especially to John, Fred, Bob, Tony, Paddy and Oscar who set up and manned the stand. A couple of pictures can be seen later on.

Raffle prize donations for the Christmas Party on December 17th would also be welcome. Don't forget your spinning tops and your hanging vessel for the competition.

The club now has a new Axminster account that entitles members to a discount when buying online or in store (High Wycombe is our nearest shop). Our account number is 1197363. They do say that all online orders will go to the registered address i.e. my house! So please try to get them to change the delivery address or let me know that a parcel will arrive.

In this issue, there is lots of turning equipment, tools and other machinery for sale. An opportunity to get an early Christmas present?

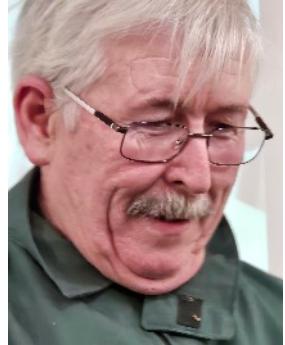
Thanks to Paddy & club members, next year's calendar of events is filling out nicely. See the back page for details.

Rob Sheehan
Secretary, Newsletter Editor & Web Site Manager

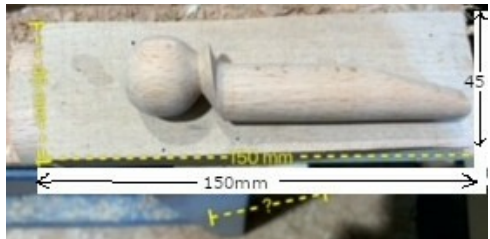
Paddy Byrne 5/11/24

Offset Snail

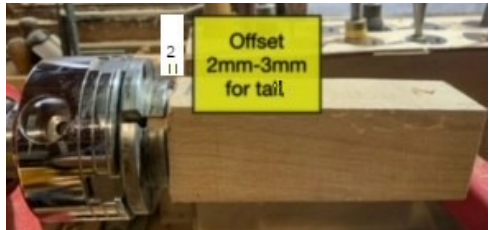
Paddy used three blocks of Beech for this project. The sizes are important for this type of offset turning. Dimensions do not include the chucking spigot. Thanks to Paddy for the photos. Snail Body: 35mm x 35mm x 150mm. Snail Eyes: 35mm x 35mm x 80mm. Shell: 60mm x 60mm x 100mm.



Snail Body. Beech block 35 x 35 x 150mm plus chucking spigot. Also shown is the finished snail body.



Hold between centres and turn a chucking spigot. Hold the spigot in a chuck and drop the end down until 2 to 3 mm is brought out of the chuck at the top. Mark the top for later re-alignment.



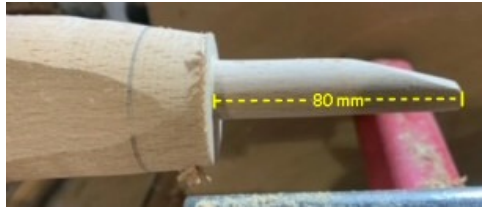
Taper down the end to 15mm. Mark lines at 35mm, 80mm and 100mm from the end. At the 35mm line, the block should have a diameter of 25 to 30mm.



Round over the end. Picture shows the 35mm, 80mm and 100mm lines on the tapered body.



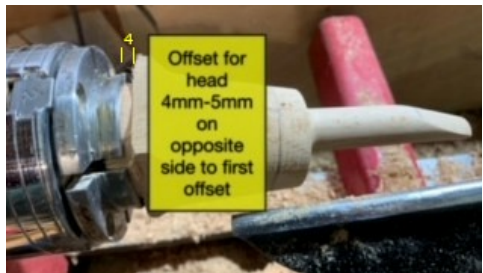
Replace the blank in the chuck so that it is parallel again (no offset). Turn the blank to circular up to the 80mm line. Do not lose any of the length from the tapered tail.



The blank curves down to the snail body at the 80mm line.



Previously, the top of the blank was marked. Put this mark at the bottom and offset the new top of the blank by 4 to 5mm. Turn the blank to round until the diameter just meets the curve of the body.



Shape the collar as a tapered disc and turn a ball for the head. Sand, seal and finish before parting off.



The completed snail body.



Eyes

The block for the eyes. 35mm x 35mm x 80mm. Turn to round and add a chucking spigot.



Eye Stalk

With no offset, mark a line 20mm in from the end and turn that portion down to 3mm diameter. Paddy had a 3mm hole drilled in aluminium to check the diameter.



Offset the block by 1 to 2mm. Turn the next 15mm down until the outside diameter is level with the stalk. Turn a shallow curve down to the stalk and round over the other side before parting off.



Then turn another identical eye!

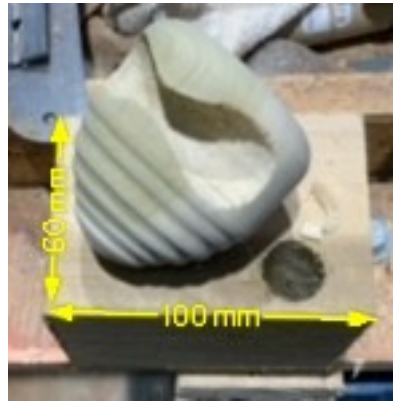
The finished eye and stalk.



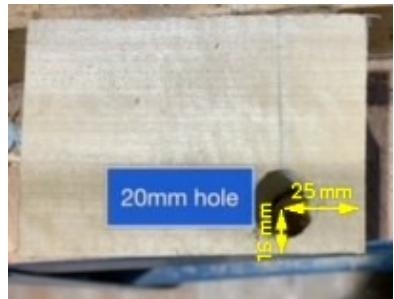
Shell

Beech block 60 x 60 x 100 mm.

Also showing the finished shell.



Drill a 20mm diameter through hole, 25mm in from the end and 15mm up from the side.



Turn the block to round and reduce the diameter until the hole just breaks through.

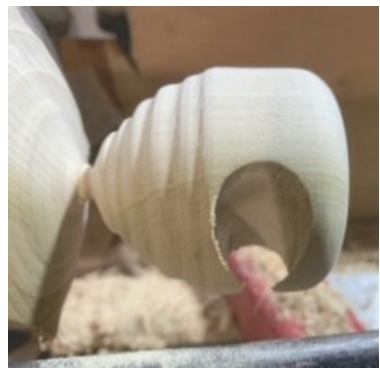
Round over the short end.



Taper the other end and create a series of steps. Round over the edge of the step down to the level of the next step.

Sand, seal and finish.

Part off.





The finished snail.



Members' Work



Members' Work



Hinckley Christmas Lights Switch-On



Items For Sale

Disclaimer

The club is not responsible for any item appearing on this page. The buyer and seller must make their own arrangements as to the condition, suitability, delivery, payment and price etc.

Ken Croft's wife is selling his lathe, turning tools and machinery. Collection only, from Coventry.

If you are interested, contact Rob Sheehan 07905185122 or robsheehan@virginmedia.com. I have enclosed a few pictures here. The rest will be sent on request. I have not been given any prices.







Items For Sale

Disclaimer

The club is not responsible for any item appearing on this page. The buyer and seller must make their own arrangements as to the condition, suitability, delivery, payment and price etc.

Chris Trivett 0116 2312 954 or via email chrisrivett@gmail.com is selling some machinery on behalf of his Father-in-law. Collection only, from near Market Bosworth.

Editor: I have not seen the equipment so I can't advise on its suitability. Chris is not a member of the club.

Item	Model	Additional Description
Wood-Turning Lathe	Record Power DML 36SH Serial No. 002269	Year of Construction 2001 450/950/2000 RPM 36" Spindle & 12" Bowl Lathe sits on welded steel bench. Selection of turning tools may also be separately available.
Pillar Drill	Naerok GP13	1/2" Capacity Power supply through switched isolator box
Bandsaw	Powerline Bk2 (2 Speed)	
Extract System	Axminster 1 HP	Registered in 2003 c/w Selection of extract hoses and gails
Circular Saw	Metabo Tk 1688 W No 43506830001	Magnum Series Supported on welded steel frame
Planer Thicknesser	AEG:- HV 82/102 & EH 102	With wood stand

Lathe



Chris Trivett Items for Sale - continued

Pillar Drill



Bandsaw



Chris Trivett Items for Sale - continued

Extract System and Planer Thickness



Circular Saw



NORTH WARWICKSHIRE & HINCKLEY WOODTURNING CLUB EVENTS 2024

December	3rd	Hands-On	
	17th	Christmas Party	

CLUB EVENTS 2025

January	7th	Hands-On	
	21st	Demo	Chris Grimshaw
February	4th	Hands-On	
	18th	Demo	Rob Sheehan - Pepper Mill
March	4th	Demo	Chris Parker (Bald Turner)
	18th	Hands-On	
April	1st	Demo	John Evans + Tony Baxter
	15th	Hands-On	Daventry Preparation
May	5th	Hands-On	Daventry Preparation
	9/10th	Woodworks at Daventry	
	20th	Demo	Bob Smith
June	3rd	Demo	Phil Steele - Pole Lathe
	17th	TBD	

Events at Other Clubs

Please contact the club to check times/dates/locations before attending

Coombe Abbey
Saturday December 14th Christmas Party
Walsgrave Baptist Church 12:30 for 1pm start